

Whitleigh Core Principles	<i>Adaptative</i>	<i>Building Connections</i>	<i>Consistency</i>	<i>Development</i>	<i>Excellence</i>
Our curriculum design is informed by Rosenshine's Principles of Instruction. Linked closely with our pedagogical approach, the curriculum has been designed using the WalkThrus to support progression through the curriculum. The content is based on the National Curriculum.	Our curriculum is designed to be accessible for all children. We use scaffolding to allow everyone to work towards the same objectives by removing other barriers to learning.	Our curriculum builds on prior learning and is progressive. Leaders have considered authentic connections throughout their subject curriculums.	Our curriculum is designed using structured planning formats throughout that use consistent symbols to indicate the type of task set. Consistent approaches to behaviour management are used in all classrooms as well as a consistent approach to teaching.	We aim for our curriculum to foster a love of learning and curiosity. Opportunities and experiences are planned for children to explore, develop and be creative.	The curriculum is designed with excellence in mind. Lessons are planned with high expectations that allow children to explore and develop their passions with limitless heights.

We are a Rights Respecting School	At Whitleigh, we are a Rights Respecting School. Our aim is to build a school community that focuses on the rights that children need in order to thrive. These form the basis of our school ethos and underpin our policies. At Whitleigh, children learn about their rights and the responsibilities that are implied within them. Adults within the Whitleigh community put children's rights at the heart of their practice and strive to ensure that the rights are taught, learned, promoted, respected, practised and protected.
--	--

The vision for the curriculum at Whitleigh Primary School:

Curriculum Aims
Our Curriculum Aims are ***Oracy, Aspirations and Experiences***. These underpin our curriculum decisions and support the school principles of A-E.

Aspirations

Tied in with our E from our A-E principles, we want our children to aim for the stars and strive for excellence. The aim of our curriculum is to enable children to reach their full potential with lessons that have high expectations and give them opportunities to explore their potential in the wider world.

Experiences

We know that some children have not been fortunate enough to experience various activities, such as going to the beach. We aim for our curriculum to give pupils opportunities that will not only develop their knowledge and skills, but give them a better understanding of the world around them.

Oracy

At WCPS, we feel that Oracy is the key to unlocking the learning in all curriculum areas. Oracy skills are vital in developing a deeper understanding and a wide breadth of skills that allow them to access and explore all subjects. We aim to give them the tools to articulate clearly, preparing them for the future.

- We want children at Whitleigh to develop a deep and lifelong love of learning.
- The national curriculum sets out the subject content of our curriculum. We aim to make this knowledge engaging and relevant to our learners, with meaningful outcomes that the children care about.
- We aim to make all learning something that the children care about. We want topics and learning journeys to foster curiosity and enjoyment as well as **develop** the whole child who leaves our school as someone wanting to make a positive contribution to the society we live in.
- We believe that children should feel passionate about the things they learn about and should have ownership of their learning, striving for **excellence**.
- Where there are authentic links, we weave individual subjects into cross curricular topics, **building connections** to give students a clear context for their learning.
- We aim to meet the needs of all learners in our curriculum by being **adaptive**. Our curriculum aims to enable all students to question, research, problem solve and take their learning to a deeper level.
- We take a **consistent** approach to planning and teaching so that children are familiar with expectations, allowing them to focus solely on the learning.
- Our curriculum aims to prepare children for the future. We are just a small part of a long and exciting learning journey!
- We aim to enable children to share their learning amongst their peers, but also with families. We feel strongly that children learn best when they collaborate and learn not just from each other, but also the world around them.

10 Core Habits These are the pedagogies that underpin the teaching of our curriculum using the Walkthrus.	Positive relationships	Signal, Pause, Insist	Sequence Concepts in Small Steps	Pitch it up	Worked examples and backwards fading
	Live modelling	Check for understanding	Feedback that move learning forward	Guided Practice	Independent Practice

WALKTHRU THE A|D|A|P|T PROCESS

CURRICULUM PLANNING



PITCH IT UP

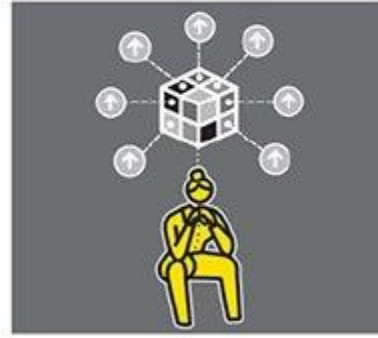
1 2 3 4 5



AIM FOR DEPTH BEFORE SPEED



EXPECT SOPHISTICATION, ACCURACY AND PRECISION



SELECT THE MORE DEMANDING CURRICULUM OPTIONS



ELIMINATE MEDIOCRITY — e.g. LOW-LEVEL TASKS



INCREASE THE INTENSITY

WALKTHRU THE A|D|A|P|T PROCESS

CURRICULUM PLANNING



AUTHENTIC CONNECTIONS

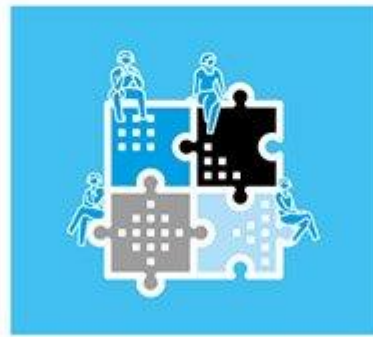
1 2 3 4 5



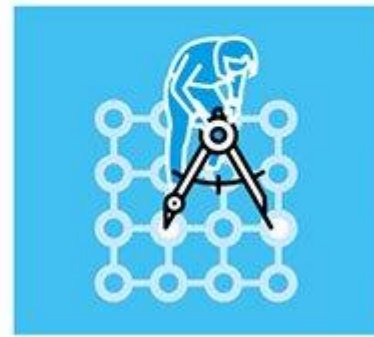
ESTABLISH A COHERENT VERTICAL CURRICULUM FOR EACH SUBJECT



LOOK FOR CONNECTIONS BETWEEN SUBJECTS



INTEGRATE OVERLAPPING KNOWLEDGE



COORDINATE PARALLEL CONNECTIONS



PLAN ASYNCHRONOUS CONNECTIONS

WALKTHRU THE A|D|A|P|T PROCESS

PRACTICE & RETRIEVAL



USING A KNOWLEDGE ORGANISER

1 2 3 4 5



DESIGN KNOWLEDGE ORGANISERS TO BE QUIZZABLE



FOCUS ON SPECIFIC ELEMENTS



READ AND REHEARSE



CLOSE OR COVER FOR GENERATIVE RECALL



CHECK FOR ACCURACY